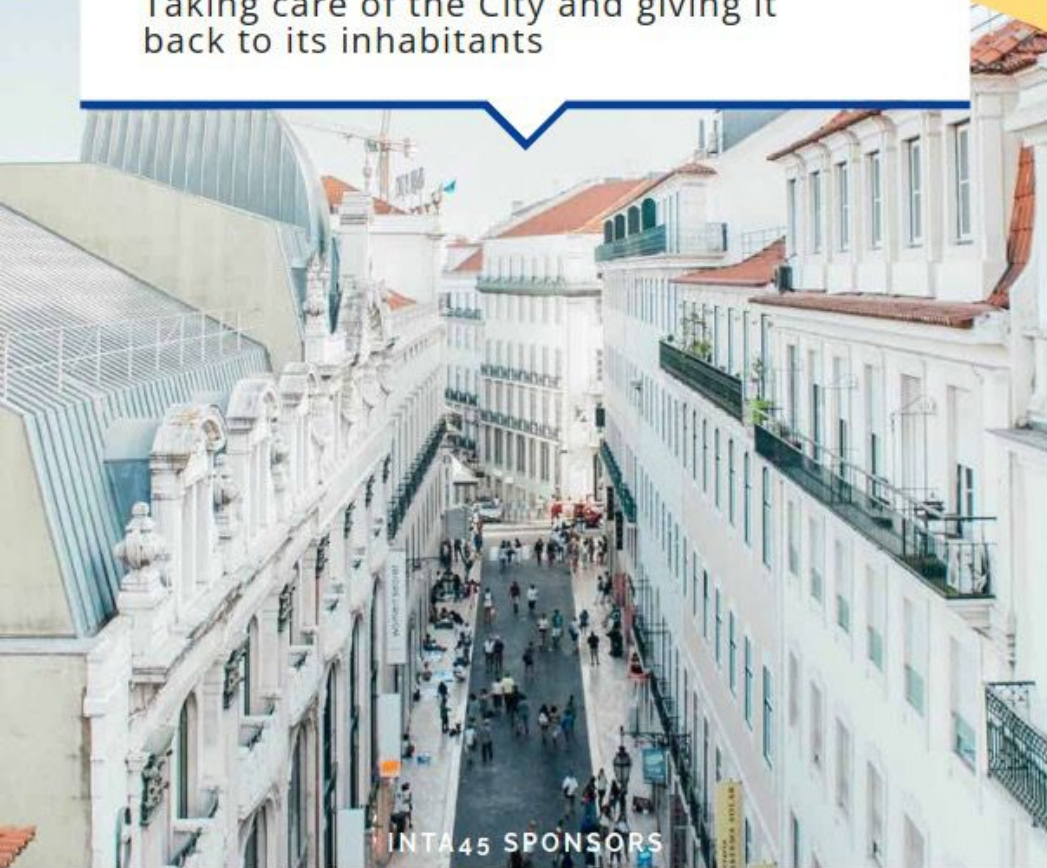




LISBON & OEIRAS, PORTUGAL | 9-11 MARCH 2023

From City to Civitas

Taking care of the City and giving it back to its inhabitants



INTA45 SPONSORS

Roundtable:

“Crisis management and urban projects: another possibility of complementarity?”

TOWARDS TO A HEALTHIER AND SAFER ENVIRONMENT

Dr. Sabina Mujkić

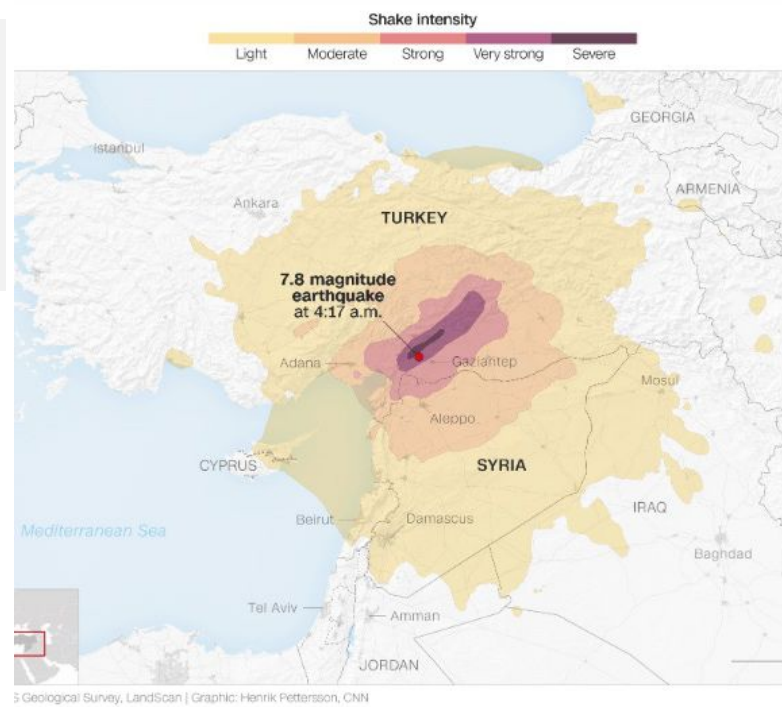
Urban Planning Institute of the Republic of Slovenia



Natural disaster - Effects from a devastating earthquake

- Directly affecting around 13,5 million people.
- More than 46000 dead after powerful earthquakes in Turkey and Syria.
- The affected regions are home to around 23 million people including 1.4 million children.
- A total of 237,000 people had been evacuated from the disaster area.

Emergency Situation Report (17.02.2023)



They stayed without basic needs:



They lost: homes, jobs, schools, hospitals, roads, parks, activities, networks, ..



📷 A destroyed building in Şanlıurfa after a 7.8-magnitude earthquake struck Turkey. Photograph: Anadolu Agency/Getty Images

Factors that contributed to such a big disaster:

- the soil on which it was built,
- bad construction that is not earthquake safe,
- the lack of enforcement of the building code
- bad materials used to build it,
- inadequate the design of the building itself,
- inadequate dimensioning, and unprofessional interventions on the building,
- inadequate Granting of Permissions.

Leading this crisis and returning to a new normal requires a complex approach.

Many stakeholders now must be involved to solve that big disaster.

“Crisis Management

is a set of measures that are taken before and after the occurrence of accidents, to reduce the consequences and losses caused by accidents.

The **human component** can be prepared by providing proper training and awareness, and urban structures continuously require standardization and monitoring.”

Prevention, Preparation, Resistance, Reconstruction

source: Solmaz Rezaei

Natural disaster affects rich cities as well.

Example of flooded street in Dubai.



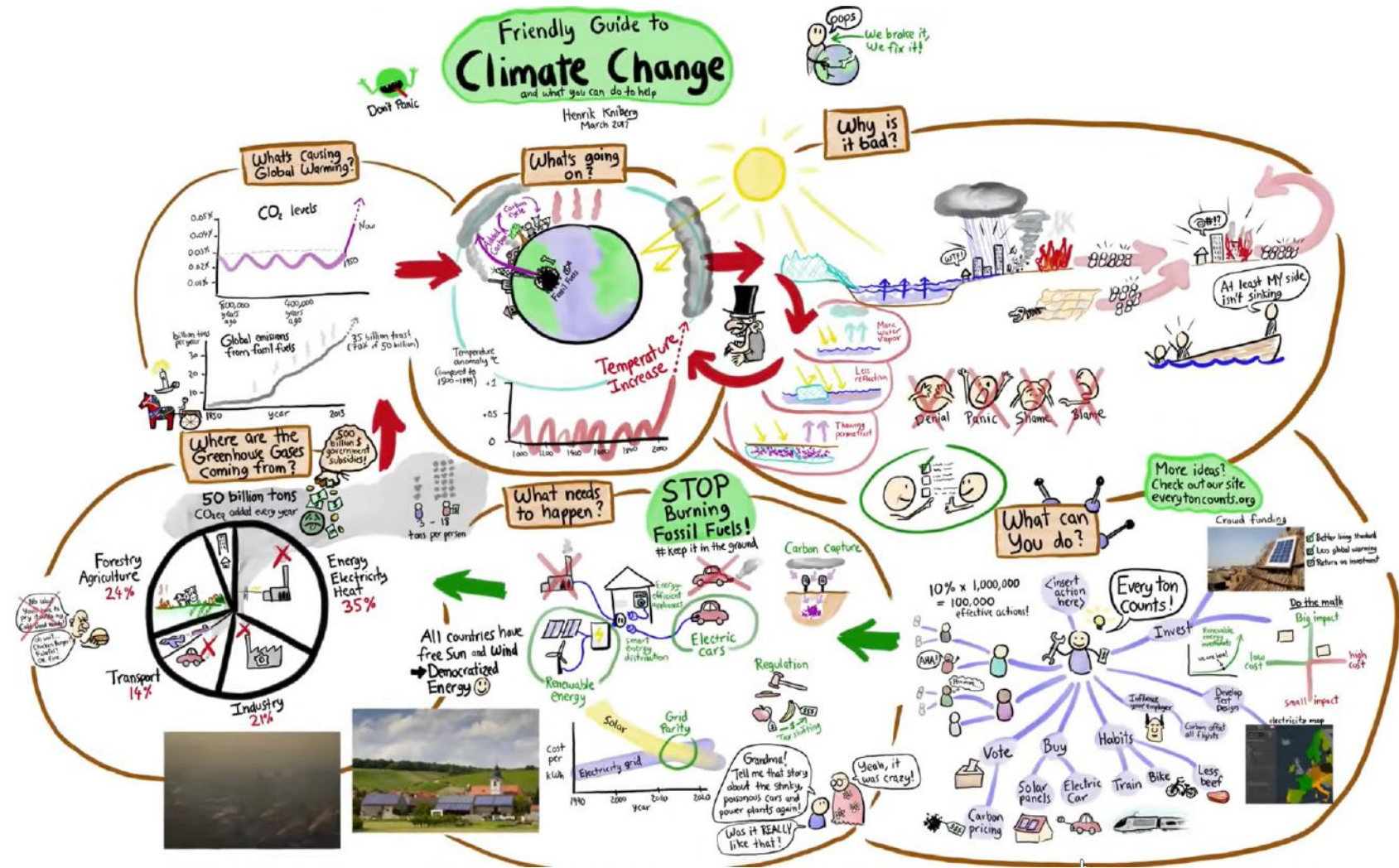
<https://gulfnews.com/uae/dubai-tackles-flooding-traffic-snarls-and-accidents-1.2142666>

SARAJEVO




Climate change, natural disasters, mass migration, displacement, pandemic, are some of crisis today.

The World Bank has warned that Climate change could push more than 200 million people to leave their homes by 2050 unless urgent action is taken.



Source: Henrik Kniberg: https://www.youtube.com/watch?v=3CM_KkDuzGQ

What can we do to help?!

An architectural rendering of a modern city street. The scene is viewed from a low angle looking down a wide road. On the left, there is a white, covered walkway supported by thick white columns. Several cars are parked or driving along this side. The road has dashed white lines for lane markings. On the right, there are tall palm trees and a modern building with a glass facade. In the background, more palm trees and a clear blue sky are visible. The overall style is clean and futuristic.

cities are green, inclusive, eco-mobile, accessible,
safe, healthy, resilient, happy, smart, low-carbon, circular city, ...



Source: <https://autotech.news/four-visions-for-the-future-of-public-transport/>



Source: BIG-Bjarke Ingels Group

TOWARDS TO POSITIVE CHANGES



DUBAI neighbourhood



Source: <https://www.bv-nestinsider.com/dubai-sustainable-city-uae-2018/>



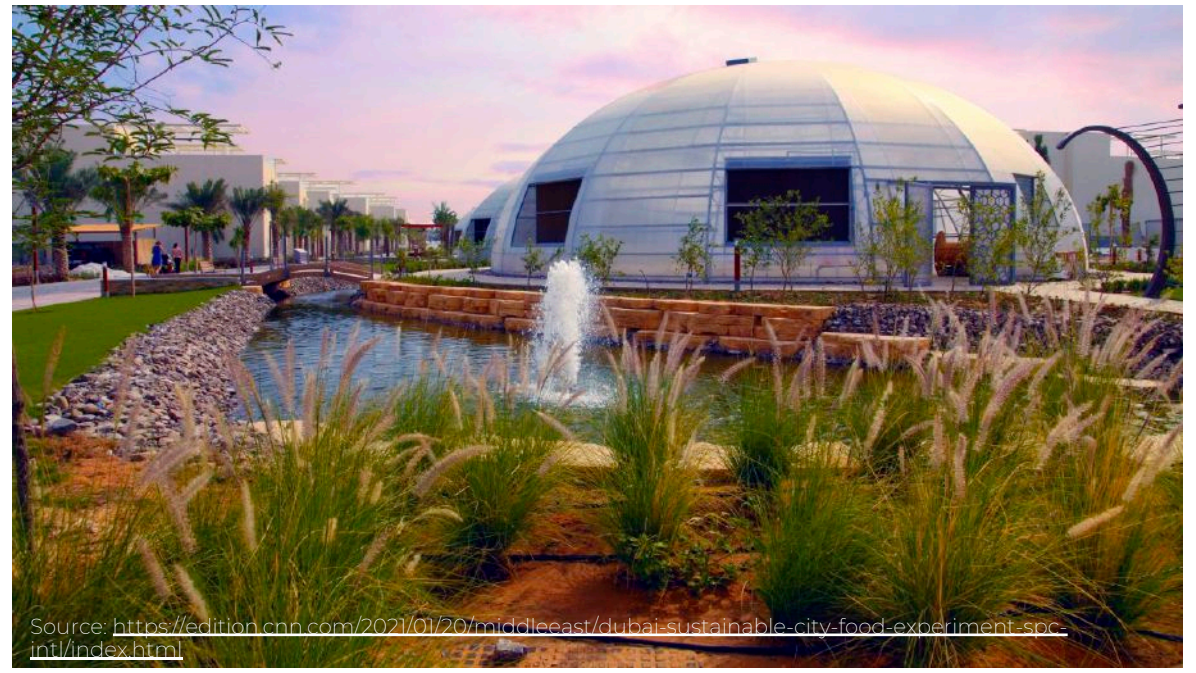
Source: www.citysolarae.com/portal/05-item/project-6/



Source: <https://edition.cnn.com/style/article/the-sustainable-city-dubai/index.html>

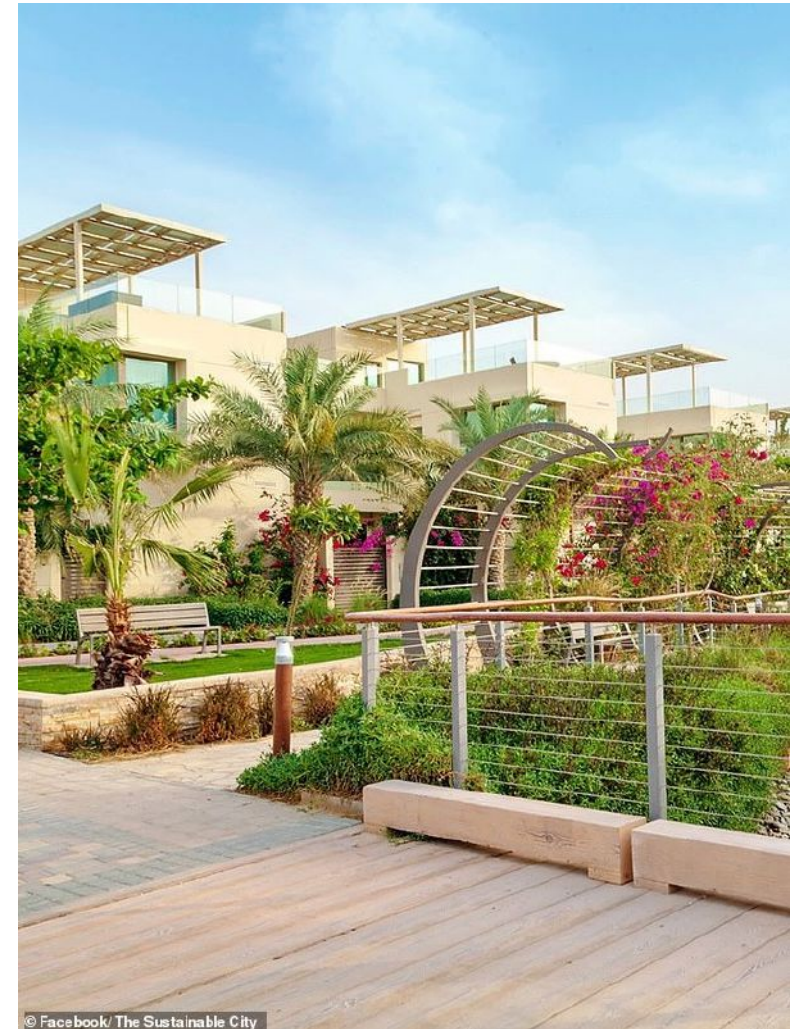


Source: <https://www.youtube.com/watch?v=ZybXCpjRoCg>

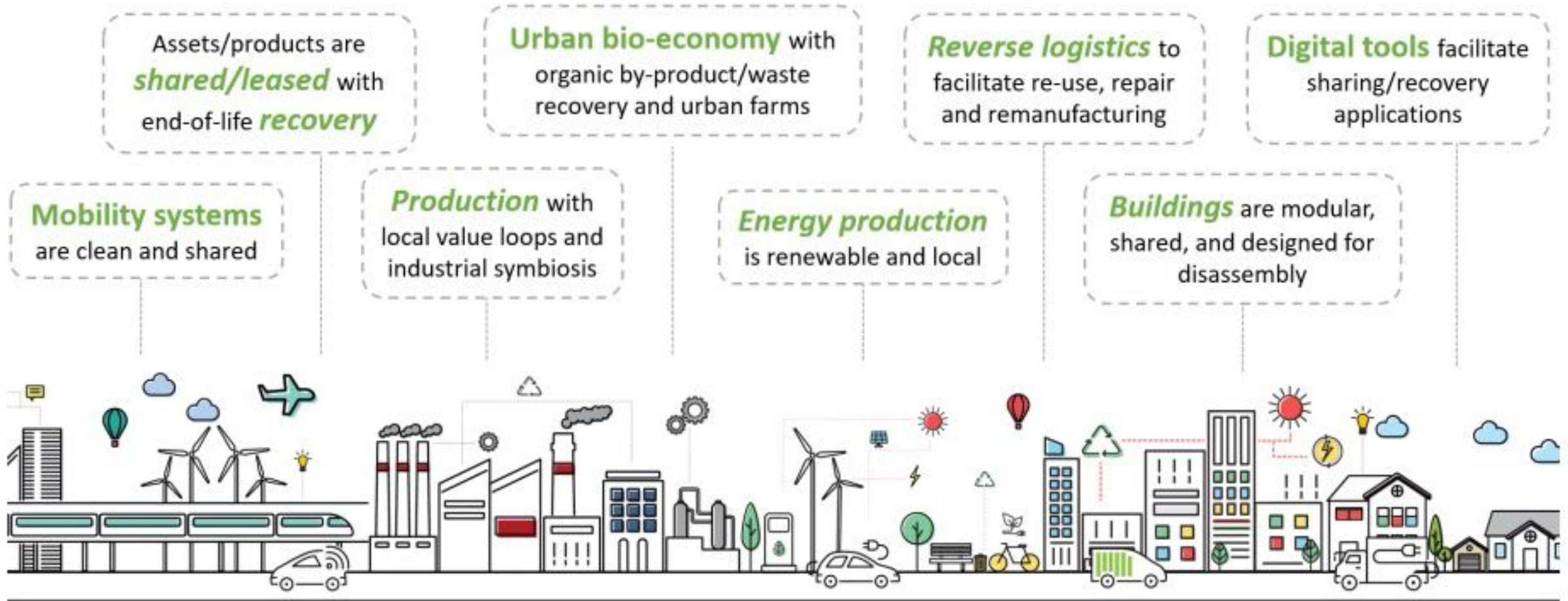


Source: <https://edition.cnn.com/2021/01/20/middleeast/dubai-sustainable-city-food-experiment-spc-intl/index.html>

- The costs of an individual living in that neighbourhood are equal to zero.
- They created a sustainable and healthy urban environment.
- Urban space and public areas are connected in the wider city ecosystem.
- Urban public spaces are focused exclusively on people.
- They have eliminated carbon emissions where most of them come from transport and buildings!



Circular city of tomorrow





They fulfilled many goals of sustainable development, for example:

- Goal 3: Good health and well-being
- Goal 11: Sustainable cities and communities
- Goal 13: Climate action: less CO₂
- Goal 15: Life on land



I Support Sustainable Development Goals



15 - Life on Land



Life on the building roof

LJUBLJANA



VISON: planned;
designed;
connected; green;
equipped; self-
sufficiency;
resilient.

Plan and manage the city with a vision.
The spatial development of the city is based on the concept of densification of the settlement fabric with:

additions, renovation, regeneration, reurbanization and rehabilitation.

Development areas are based on the condition and possibilities of further development classified into: areas of comprehensive renovation, areas of internal development, new development areas.

Rationale Strategic plan

The new Municipal Spatial Plan of the City of Ljubljana is built on four guiding principles:

- Slovenia and its capital city Ljubljana have an exceptional geo-strategic position at the junction of four European macro-regions (Alps, Central Europe, Southeast Europe, Mediterranean). Slovenia is the only European country included in 4 transnational cooperation programmes co-financed under the ERDF for the 2007-13 period.
- Slovenia and its capital city Ljubljana lie at the crossroads of two main European corridors (TEN corridors V and X).
- Ljubljana is a very green city in the sense of land cover and land use, with distinctly high shares of forests, agricultural lands, parks, greenery, sports and recreation grounds and water surfaces (75% of the surface).
- The history of spatial and urban planning of Ljubljana is long and successful.

Environmental Report

To ensure adequate cross-checking of particular concepts and solutions with environmental consequences the Environmental Report was produced. This document assessed whether the solutions planned in the Strategic plan and Implementation plan benefit general improvement of the environment or cause negative effects. In the latter case so called alleviation measures are prescribed, which have to be executed before any further development occurs. The environmental report applies to both the strategic and implementation levels.

Natural and cultural heritage Areas threatened by floods Water protection areas

Added value

1. COORDINATION



2. PARTICIPATION



3. INTEGRATION



Implementation plan

HIGHLIGHTS

- MOSAIC INTERVENTION OF FUNCTIONS
- PRINCIPLE OF COMPATIBLE ASSOCIATION
- CITY DENSIFICATION
- REGENERATION OF DEGRADED URBAN AREAS
- RENEWAL AND PREVENTION OF DISPersed DEVELOPMENT
- IMPROVING DISTINCTNESS OF THE CITY
- IMPROVING ACCESSIBILITY TO PROGRAMMES AND ARRANGEMENTS CATERING TO NEEDS OF VARIOUS POPULATION GROUPS
- RESTRICTING TRAFFIC
- SUSTAINABLE SPATIAL DEVELOPMENT

27 public hearings

Interactive Plan on the web

expert assistance in understanding the document

expert assistance at articulation of comments

video show 3D model of the city with planned developments

Projects

URBAN REGENERATION

Spatial development of the City of Ljubljana is oriented towards densening and optimal spatial use by renewal, regeneration and redevelopment. Its rationale is built on well-thought out use of development potentials that ensure the desired distribution of activities and functions, comprehensive offer and supply of programmes, high quality living conditions and safety, which also meet contemporary environmental standards. Urban and architectural design guidelines define the main carrying structures and design guidelines for development, preservation or upgrading of the distinct structure of the city. The urban structure of Ljubljana is manifested by the superposition of distinct areas: the city centre, Magistrala (North-south boulevard) and avenues, compact city suburbs.

PUBLIC SPACE & GREEN SYSTEM

The framework of the green system is built on the natural hinterland and green wedges reaching to the city centre. It includes green wedges that ensure ecological, climatic and functional connections between the built-up areas of the city. The Path of memories and brotherhood is the largest urban park and a cultural monument in public space. It is the most important connecting physical and structural element and the most visible element of public urban space.

Public participation

- 1 public exhibition
- 1 publication of the local newspaper Ljubljana sent to all households dedicated to the future development
- 1 public exhibition in 17 neighbour communities
- 5 public hearings of the proposal
- 17 public hearings and 1 exhibition in 17 neighbour communities
- Interactive Plan on the web with interface for submitting appeals online
- 5 public round tables on different topics
- 1 publication of the local newspaper Ljubljana sent to all households dedicated to the document
- 5 public hearings and 1 exhibition in 17 neighbour communities
- Interactive Plan on the web with interface for submitting appeals online
- video show 3D model of the city with planned developments
- explanatory didactic graphics for the public
- expert assistance in understanding the document and articulation of comments



The transformation of streets in Ljubljana – PEDESTRIANS FIRST





The transformation of streets and car parking into public places for people





Public spaces by the river



Every Small Action Matters, Because when
7 Billion people do that thing, it changes the world



MUITO OBRIGADA



Dr. Sabina Mujkić

Urban Planning Institute of the Republic of
Slovenia

m: +386 (0)31 420 471

<http://www.uirs.si>

Email: sabina.mujkic@uirs.si